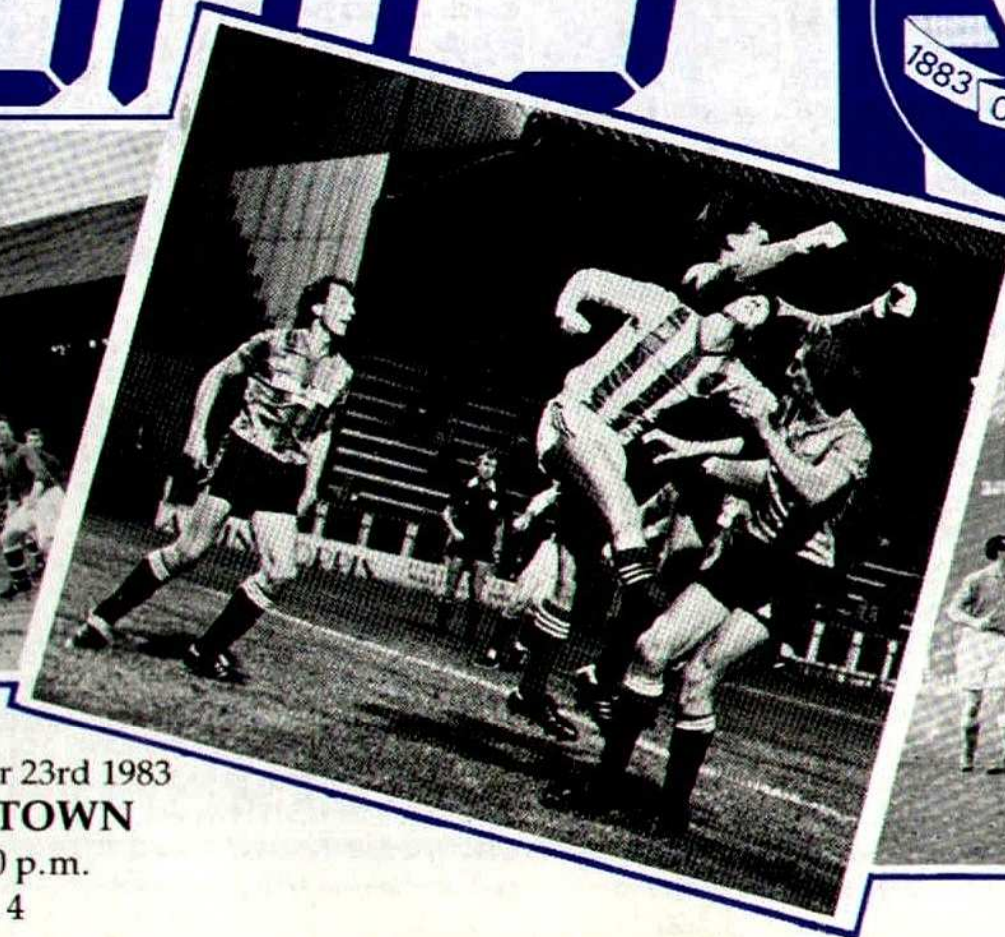
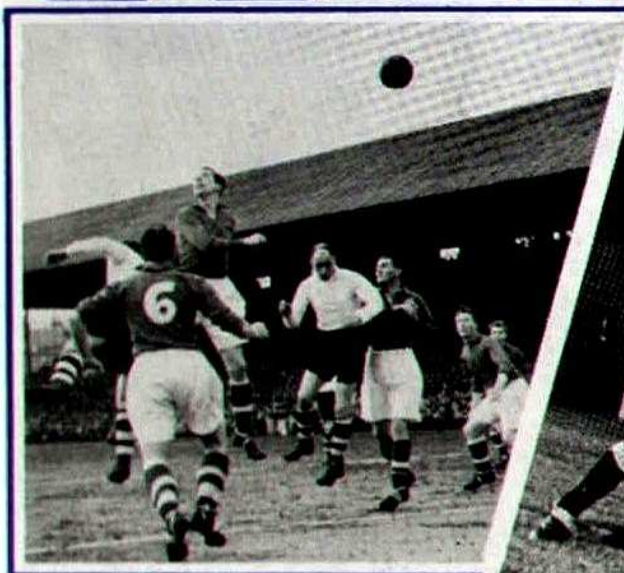


# STOCKPORT COUNTY 1

40p



Official Programme



Friday, September 23rd 1983  
**SWINDON TOWN**  
Kick-Off 7.30 p.m.  
Division 4

Season 1983-84



# From the Manager's Office



## STOCKPORT COUNTY FOOTBALL CLUB

EDGELEY PARK,  
HARDCASTLE ROAD,  
STOCKPORT, CHESHIRE,  
SK3 9DD

Tel. 061-480 8888  
Office Hours: Mon-Fri 09.00-17.00

### Honours

- Div. 3N Champions 1921-22, 1936-37
- Div. 4 Champions 1966-67

### Directors

- A. N. KIRK (Chairman/President)
- P. LUKIC
- J. LEWIS
- J. R. G. WHITE

### Chief Executive and Company Secretary

- TERRY McCREERY FA&I

### Manager

- ERIC WEBSTER

### Assistant Secretary

- PETER LAMB

### Hon Vice-Presidents

- MIKE YARWOOD OBE
- FREDDIE PYE
- A. M. BARLOW

### Hon Medical Officers

- Dr. R. E. HARDMAN
- Dr. C. J. MARTIN

### Physiotherapist

- CHRIS WYCH MCSP SRP

### Programme Production Team

- Editor: HOWARD JONES
- Photographs: FREELANCE NEWS PICS.
- Printed and Designed by  
ENGRAVING SERVICES LIMITED  
Denhill Road Industrial Estate, Moss Side  
Manchester M15 5NR.  
061-226 1197

## ERIC WEBSTER in conversation with PAUL BRADY of the STOCKPORT MESSENGER

THIS evening we welcome Swindon Town to Edgeley Park at the start of a very busy period for the club which we hope will provide plenty of entertainment for our spectators.

Our last fixture was at Northampton Town last weekend when the home club were experimenting with Sunday soccer and were rewarded with a bigger than average gate, although that may be equally as well explained by the fact that Northampton went into the game with an unbeaten record.

I felt that the game was generally spoiled by the windy conditions on the day which probably did more harm to our own game than Northampton's since the home side was packed with big men, while we were trying to create the more attractive football and the wind obviously affected our efforts to do this.

Although we missed some good openings and then had to stave off the home team's late efforts to

snatch a victory, a point away from home was a reasonably satisfying result and in fact left us unbeaten in the last four games.

I think this short spell goes to illustrate well what I was saying earlier in the season about being patient and not worrying too much if there happens to be a couple of apparently bad results in quick succession. I think we were bottom of the table after the first two games but obviously to draw any lasting conclusions about any two games, whenever they occur in the season, would not make any real sense.

Now we are in a position to obtain a more satisfactory and more realistic position in the league table and hopefully will be able to field a more settled side in the near future.

The end of Mike Quinn's suspension means that there will be a further change tonight, and I don't think the same eleven players have taken the field in successive games so far this season which obviously brings a few extra problems in organising the team's tactics. However, I think our basic outlook and pattern has been to provide as



much entertainment as possible for those watching our games and that will remain the intention in future matches too.

### Cover Caption (Centre)

County striker **Mike Power** is well and truly 'cuffed' around the ear by Colchester 'keeper **Alec Chamberlain**, during action from our recent League encounter at Edgeley Park. Colchester's player coach, **Stewart Houston** looks on pictured left.

● The views expressed in this programme are not necessarily the views of Stockport County Football Club.

● Programme Subscription Rates  
(UK)—£17.00—Full Season  
Overseas—£22.00—Full Season



# Introducing The Canon League.

**Canon**



From the beginning of the 1983 football season, The Football League Championship becomes The Canon League.

This is as a result of the biggest sponsorship in British sporting history and because Canon UK believes in the future of League Football you, the fans, will benefit from the best football deal of all time.

Canon sponsorship injects £1,000,000 into football each year for the next three seasons and there is plenty in it for you, the fans.

Canon's involvement with football will not change the format of The League. The Championship will run in the traditional and well proven way but with one important difference. Each of the 92 clubs will benefit and, for the first time, winners of all four divisions plus placed clubs will receive prize money.

In addition, to generate greater excitement and entertainment, awards will be given for monthly and seasonal goal-scoring achievements by clubs. And there will be payments to clubs that attract family audiences, loyalty awards to individuals and many more exciting and

worth while benefits.

But why has Canon, manufacturer of cameras and business equipment, including copiers, computers, copyphones, calculators, microfilm and electronic typewriters, whose years in sports sponsorship have been spent mainly at an international level, suddenly chosen to sponsor The Football League Championship?

Canon (UK) Ltd., whose headquarters are at Croydon in Surrey, is a company employing more than 700 staff. This sponsorship can be interpreted as a gesture of faith in the same British expertise that has taken the company from nothing to market leader in just seven years.

Canon has been involved with sports sponsorship for many years—World Cup football; skiing; ice-skating; showjumping; motor racing and the Olympics. Now it has chosen to sponsor League Football and looks forward to an association with the world's most famous national football competition—The Canon League.

Canon (UK) Limited, Waddon House, Stafford Road, Croydon CR9 4DD.



# Meet our Visitors

THIS evening we entertain a **Swindon Town** team, who have made rather a mixed start to what is only their second-ever season in Division Four. Their confidence will be boosted a little tonight by the recollection that after losing all three games that they played here in Division Three they picked up their first-ever points at Edgeley Park last November with a 2-1 win.

Founded in 1881, two years before ourselves, Swindon Town had already made their mark before being elected to the Football League in 1920, for as members of the Southern League they reached the semi-finals of the F.A. Cup in both 1910 and 1912.

They were members of Division Three (South) throughout its existence, surviving four re-election applications and climbing to fourth place on three occasions. In their pre-Football League days they fielded a number of outstanding players, amongst them inside forward **Harold Fleming**, who won 11 England caps and was a ball artist who could also score goals. At one stage he and **Grenville Morris** were reckoned to be the best pair of club inside forwards in the game while in defence **John Walker** was one of the leading Scottish defenders of his time. Between the wars **Harry Morris** clocked up a club record career tally of 216 goals while in the early postwar years **Maurice Owen** was an outstanding striker who later became an equally effective defender and played a total of 554 league games up to 1963.

By the time Maurice hung up his boots Town had won promotion to Division Two for the first time. They stayed up for only two seasons, but on their return to Division Three they developed into a side that could take on any team in the country and on their day match them for football. Rarely has a Third Division club developed so much talent at the same time

with **Mike Summerbee**, **Bobby Woodruff** and **Ernie Hunt** moving on to Manchester City; **Wolverhampton Wanderers** and **Everton** respectively in the mid-sixties and **Don Rogers**, **Rod Thomas** and **John Trollope** staying on to star in the sensational 1968-69 League Cup triumph against Arsenal at Wembley.

This was the climax of a number of outstanding cup feats in the sixties and for good measure Swindon also went up to Division Two at the end of the same season. A year later they came within striking distance of Division One when finishing in fifth place and also won the Anglo-Italian Cup for good measure, but their stay in Division Two was still relatively shortlived.

They were relegated in 1974 and embarked on a period of fluctuating fortunes. They just missed promotion in 1974-75, just escaped relegation in 1975-76 and then after a couple of fairly uneventful seasons fell away badly in 1978-79 and 1979-80 after being in the promotion stakes in the first part of each season. Then after just escaping relegation at the end of 1980-81 the Robins went down at the end of 1981-82, losing their last game at Newport County when they needed a win in order to stay up.

In Division Four for the first time last



**KEN BEAMISH**

season, they began the campaign with mixed fortunes but after losing at home to Halifax Town were not beaten at the County Ground again until the end of

## Facts and Figures



**Founded:** 1881.

**Club address:**

County Ground,  
Swindon Wiltshire SN1 2ED.

### OFFICIALS

**Chairman:** MR M.W. EARLE

**Secretary:** MR R.J. JEFFERIES

**Manager:** MR K. BEAMISH

**Coach:** MR P. RICHARDSON

**Physio:** MR K. MORRIS

**Nickname:** THE ROBINS

**82-83 Top Scorer:** PAUL RIDEOUT 20

**Club Colours:** RED/WHITE/RED

### HONOURS

Promoted Division 3: 1962-63 (2), 1968-69 (2)

F.A. Cup semi-finalists: 1910, 1912

Football League Cup Winners: 1968-69

### ADMISSION & PRICES

Main Stand seats £2.80, Programmes 40p.

Results between the sides over the past eight meetings:

	Home	Away	Summary of League Encounters:						
			P	W	D	L	F	A	
1982-83:	1-2	0-2	Home	4	3	0	1	7	3
1968-69:	2-1	0-1	Away	4	0	0	4	0	8
1967-68:	2-0	0-2	Total	8	3	0	5	7	11
1958-59:	2-0	0-3							



# SWINDON TOWN

**Back Row (L-R):** Mike Graham, Charlie Henry, Scott Endersby, Jimmy Allen, Kevin Baddeley, Leigh Barnard.

**Middle Row (L-R):** David Hockaday, Nigel Gray, Paul Richardson (coach) Jimmy Quinn, Andrew Rowland.

**Front Row (L-R):** Alan Mayes, Colin Bailie, Ken Beamish, (Team manager), Gary Emmanuel, Paul Batty.

December. They hit a bad patch in the second half of the season being at one stage without a win for nine games. Then came a late-season rally with four wins in their last six matches, but they could not climb higher than eighth place. Thus they were 15 points adrift of promotion at the end of the day with only the consolation of reaching the fourth round of the F.A. Cup and taking a point from their visits to both Fourth Division leading clubs Wimbledon and Hull City as compensation, for a season, which at one stage promised much.

So far this term at home they have beaten Chester 4-0, and lost to Halifax Town 2-3, and in away games at both Chesterfield and Darlington 0-1, besides going out 4-2 on aggregate to Third Division Plymouth Argyle in the Milk Cup. All of which leaves manager Ken Beamish with plenty to think about.

Ken joined Tranmere Rovers as an apprentice in the mid-sixties, making his first team debut as an 18 year old. It was after scoring consistently over the next couple of seasons that he moved to Brighton and Hove Albion in March 1972. During his Tranmere days he helped them to promotion from Division Four and provided the last vital push to take Brighton up to Division Two within two months of his arrival. 1974 saw him move to Blackburn Rovers where he managed 17 goals in their Third Division Championship year of 1974-75.

Ken move to Port Vale in 1976 and after two seasons with the Potteries club he had

one season at Gigg Lane with Bury before returning to Tranmere and playing a further two seasons with the club with whom he began his career. In all Ken netted 158 goals in 552 League games, besides making just as valuable a contribution in making space for colleagues up front by his all-action approach.

After a spell as club coach he took over as manager from **John Trollope** last March, having added two more first team appearances to his record while coach. Since the transfer of star striker **Paul Rideout** in the close season to Aston Villa, Ken has signed diminutive **Alan Mayes**



**ALAN MAYES**

from Chelsea for a second spell at the County Ground where he was previously such a prolific scorer in the late 1970's. Other newcomers to the club are goalkeeper **Scott Endersby** from Tranmere Rovers and defender **Nigel**



**Gray** from Orient, midfielder **Paul Richardson** from Sheffield United and striker **Dave Hockaday** from Blackpool. Dave and Alan have already found the net this season as has long-serving ex-Bury man **Andy Rowland**, who gained 16 goals last season in 45 appearances.

**Gary Nelson** signed from Southend United in August has also been on the mark this term while in midfield **Mike Graham** an ex-Bolton player is keeping up last season's ever-present habit. In defence is **Gary Emmanuel** who is in his third season with the club after spells at Birmingham City and Bristol Rovers as to is **Charlie Henry** a defender from Acton in London, who will shortly complete 100 league appearances for the club.

Also in the side in the opening games have been local lad **Paul Batt** and **Colin**

**Baillie** from the Emerald Isle. **Jimmy Allen** holds down the goalkeeping spot after completing well over 360 league games for the club since signing from Scottish Junior Football in 1970.

The teams that played here last season Swindon's 2-1 win were:-

**County:** Lloyd, Rutter, Sherlock, Emerson, Bowles, Thorpe, Williams (Smith 80), Phillips, Quinn, Park, Coyle.

**Swindon Town:** Allen, Henry, Baddeley, Emmanuel, Lewis, Graham, Pritchard, Batty, Rideout, Rowland, Barnard. Sub Quinn (not used).

**Scorers:** County: Phillips (26).

Swindon: Emmanuel (13), Rowland (57).

**Half-time:** 1-1

**Attendance:** 2,197

**Referee:** Mr. A. Saunders (Newcastle-upon-Tyne).





### *Today's Top Team*

*"The depth of experience and desire to satisfy in all departments must make us one of today's top teams".*

## *Bowdon Hotel*

**ALTRINCHAM**

Egon Ronay Recommended. 3 Star AA & RAC  
Telephone: 061-928 7121 and 8825 (7 lines)

**ASK YOUR SPORTS  
RETAILER FOR**

## **CORDWELL NETS**

*Sports Netting Specialists*  
2A Longshut Lane West, Stockport.  
**061-429 6615**

# Get a little **Xtra** help with the future.

## **HALIFAX**

The world's biggest building society.

Local Office:

64, Chestergate, Stockport,  
Cheshire SK1 1NS.

Telephone: 061-477 2733.  
District Manager—D.R. Merry

*Records played at Edgeley Park  
are supplied by*

## **Discasette Records**

25 Gorton Road, Reddish.  
Telephone: 442 8013 for all your  
records, tapes and accessories.

## *William* **HILL**

*"Where the action is"*

**To open a Credit Account . . .**  
**Telephone: 061-480 4959**





Editor—Howard Jones

## TV! IT'S THE RUIN OF US ALL

OK so we have 'live' Canon League soccer to look forward to on the box this season. So what, I say. Myself I much prefer to watch the game live (at the ground that is) than to see it on TV... which to be honest, bores the pants of me.

Indeed the money ploughed into the League by the TV companies has been a godsend to clubs such as ourselves over the years, but this season with the game going out 'live' surely it can only harm the attendances of matches being played on the same nights/afternoons.

Take ourselves for instance, we will clash with live soccer on at least two occasions, so how will that effect the Edgeley Park attendance? Only consolation in it as far as we are concerned is that if we slip below our average gate this season, then the League will compensate us for loss of income. But what of the players who will have to perform to even sparser terraces.

Of course we are hoping that County will be one of the teams challenging for honours later in the campaign which perhaps will stop some supporters from staying away. Certainly we hope so as we are looking for your support on the two nights in question and of course in our other home games as well.

## YOUR 'LIVE' VIEWING GUIDE!

Sun Oct 2—Tottenham Hotspur v Nottingham Forest

2-35 p.m. ITV.

Sun Oct 23—Wolverhampton Wanderers v Aston Villa

2-35 p.m. ITV.

Fri Oct 28—Watford v West Ham United 7-15 p.m.

BBC.

Sun Nov 6—Liverpool v Everton 2-35 p.m. ITV.

Sun Nov 27—West Ham United v Manchester United

2-35 p.m. ITV

Fri Dec 16—Manchester United v Tottenham Hotspur

7-15 p.m. BBC

Fri Jan 13—Queens Park Rangers v Manchester United

7-15 p.m. BBC

Fri Jan 20—Aston Villa v Liverpool 7-15 p.m. BBC.

So then there we have it, six fixtures prior to New Year and only two afterwards. However in saying that, we will be treated if that's the right word, to two more **FIRST DIVISION** fixtures later in the season, probably when all the promotion and relegation issues have been settled. Seems almost lunacy to me to televise 8 matches with nothing at stake when later in the campaign there may well be some mighty attractive fixtures with everything to play for. These first eight matches could well be non-events and seems to me totally lacking in thought to pre-plan matches so far in advance.

To those of us who know better I would just like to point out to our friends at the BBC and ITV that there are three other Canon League Divisions, or have they forgotten the Football League consists of 92 clubs not just 22.

## CANON LEAGUE—Division 4

(Up to and including Sunday, 18th Sept.)

	H O M E					A W A Y					
	P	W	D	L	F	A	W	D	L	F	Pts.
1. York City .....	5	3	0	0	8	1	1	0	1	3	12
2. Colchester United ..	5	2	1	0	6	1	1	1	0	2	11
3. Bury .....	5	2	1	0	5	1	1	1	0	3	11
4. Hereford United ...	5	2	1	0	4	2	1	0	1	4	10
5. Crewe Alexandra ..	5	2	1	0	4	2	1	0	1	1	10
6. Doncaster Rovers ..	5	2	0	0	6	0	1	0	2	4	9
7. Northampton .....	5	1	2	0	2	0	1	1	0	4	9
8. Chesterfield .....	5	2	0	0	3	1	0	2	1	4	8
9. Peterborough Utd ..	5	2	0	0	8	1	0	1	2	3	7
10. Bristol City .....	5	2	0	0	6	0	0	1	2	2	7
11. Wrexham .....	5	2	1	0	4	0	0	2	1	5	7
12. Reading .....	5	2	1	0	10	5	0	0	2	1	7
13. Aldershot .....	5	0	0	2	2	6	2	1	0	2	0
14. Tranmere Rovers ..	5	1	1	0	3	2	0	2	1	1	6
15. Halifax Town .....	5	0	2	0	2	2	1	1	1	3	5
16. Darlington .....	5	1	0	1	1	2	1	0	2	2	4
17. Rochdale .....	5	2	0	0	5	1	0	0	3	1	6
18. Blackpool .....	5	1	0	1	3	3	0	2	1	1	5
19. COUNTY .....	5	0	1	1	0	2	1	1	1	4	7
20. Swindon Town .....	5	1	1	1	6	3	0	0	2	0	4
21. Hartlepool United ..	5	1	1	1	3	3	0	0	2	1	5
22. Mansfield Town .....	5	1	0	2	3	4	0	1	1	0	4
23. Torquay United .....	5	0	1	2	1	3	0	1	1	2	2
24. Chester City .....	5	0	1	1	1	2	0	0	3	2	10

## THE COUNTY CENTENARY CLUB

MORE County supporters are urged to join we have 137 members but aim to pass the 150 mark soon all the money raised will go towards helping County and is used in the payment of day to day expenses.

Please complete the coupon below and pledge what you can afford. Prize and Cash draws are held on a regular basis and these are featured in the Express/Advertiser Newspaper. Our target is £10,000 in our first year.

P. Wallace.

I would like to take a share in saving Stockport County and pledge: £ ..... per month over the next 12 months.

I enclose my first contribution of £ ..... and will make further contributions on a monthly basis as stated.

Name .....

Address .....

.....Date .....

• All contributions to be made by postal order or cheque and NOT cash. Payable to the Stockport County F.C. Appeal Fund. Please send to: Mr. P. Wallace, c/o Stockport Express Advertiser, Wood Street, Hollywood, Stockport, SK3 0AB.





# Hatters Roll Call

Home Matches in <b>Bold Typeface</b> , Details in <i>italics</i> —Cup ties					N.B. Column headed 'When we last won' denotes the season County last won the corresponding fixture. —Denotes never won.			
• Player injured/withdrawn and substitute ★ Star Man    ✕ Sent off    + Player booked								
1983	Date	Opponents	Result	When we last won	Attendance	Pts.	Pos.	Goalscorers.
S	Aug 27	<b>YORK CITY</b>	0-2	2-1 (82-83)	2,165	0	21	—
Tu	Aug 30	<b>Rochdale (MC1)</b>	3-0	—	1,839	—	—	Quinn 2(1p), Sword
S	Sep 3	<b>Reading</b>	2-6	3-1 (74-75)	2,469	0	24	Williams, Rutter
Tu	Sep 6	<b>Mansfield Town</b>	2-1	1-0 (62-63)	2,166	3	18	Quinn, Sword
F	Sep 9	<b>COLCHESTER UNITED</b>	0-0	3-0 (82-83)	2,077	4	19	—
M	Sep 12	<b>ROCHDALE (MC1)</b>	2-2	—	2,160	—	—	Williams 2
Su	Sep 18	<b>Northampton Town</b>	0-0	3-2 (82-83)	3,189	5	19	—
F	Sep 23	<b>SWINDON TOWN</b>	H	2-1 (68-69)				
M	Sep 26	<b>WREXHAM</b>	H	1-0 (66-67)				
F	Sep 30	<b>Crewe Alexandra</b>	A	2-0 (81-82)				
M	Oct 3	<b>OLDHAM ATHLETIC (MC2)</b>	H	—				
S	Oct 8	<b>Chesterfield</b>	A	2-1 (62-63)				
S	Oct 15	<b>DARLINGTON</b>	H	2-1 (82-83)				
M	Oct 17	<b>ALDERSHOT</b>	H	2-1 (82-83)				
S	Oct 22	<b>Chester City</b>	A	2-0 (82-83)				
Tu	Oct 25	<b>Oldham Athletic (MC2)</b>	A	—				
S	Oct 29	<b>BLACKPOOL</b>	H	3-0 (82-83)				
Tu	Nov 1	<b>Bury</b>	A	1-0 (80-81)				
S	Nov 5	<b>Rochdale</b>	A	1-0 (79-80)				
F	Nov 11	<b>HALIFAX TOWN</b>	H	4-2 (82-83)				
S	Nov 19	<b>FAC1</b>	—	—				
S	Nov 26	<b>Peterborough United</b>	A	2-1 (80-81)				
F	Dec 2	<b>TORQUAY UNITED</b>	H	1-0 (82-83)				
S	Dec 10	<b>FAC2</b>	—	—				
F	Dec 16	<b>TRANMERE ROVERS</b>	H	3-2 (82-83)				
M	Dec 26	<b>Bristol City</b>	A	2-0 (14-15)				
Tu	Dec 27	<b>HEREFORD UNITED</b>	H	2-1 (82-83)				
S	Dec 31	<b>Doncaster Rovers</b>	A	1-0 (69-70)				
1984								
M	Jan 2	<b>HARTLEPOOL UNITED</b>	H	4-0 (78-79)				
F	Jan 6	<b>READING</b>	H	2-0 (77-78)				
S	Jan 14	<b>York City</b>	A	2-1 (66-67)				
F	Jan 20	<b>NORTHAMPTON TOWN</b>	H	2-0 (79-80)				
S	Jan 28	<b>Colchester United</b>	A	1-0 (81-82)				
F	Feb 3	<b>CREWE ALEXANDRA</b>	H	3-2 (82-83)				
S	Feb 11	<b>Swindon Town</b>	A	—				
M	Feb 13	<b>BURY</b>	H	2-1 (82-83)				
S	Feb 18	<b>Blackpool</b>	A	1-0 (24-25)				
F	Feb 24	<b>CHESTER CITY</b>	H	2-1 (72-73)				
S	Mar 3	<b>Aldershot</b>	A	—				
M	Mar 5	<b>ROCHDALE</b>	H	3-0 (78-79)				
F	Mar 9	<b>Halifax Town</b>	A	3-1 (79-80)				
F	Mar 16	<b>CHESTERFIELD</b>	H	3-1 (66-67)				
S	Mar 24	<b>Darlington</b>	A	1-0 (78-79)				
F	Mar 30	<b>Wrexham</b>	A	4-1 (65-66)				
F	Apr 6	<b>MANSFIELD TOWN</b>	H	3-0 (81-82)				
S	Apr 14	<b>Torquay United</b>	A	2-1 (80-81)				
S	Apr 21	<b>BRISTOL CITY</b>	H	5-1 (13-14)				
M	Apr 23	<b>Hereford United</b>	A	—				
F	Apr 27	<b>PETERBOROUGH UNITED</b>	H	3-0 (81-82)				
S	May 5	<b>Hartlepool United</b>	A	2-1 (79-80)				
M	May 7	<b>DONCASTER ROVERS</b>	H	2-1 (80-81)				
S	May 12	<b>Tranmere Rovers</b>	A	1-0 (79-80)				

1	2	3	4	5	6	7
Salmon*	Rutter	Sherlock	Emerson	Sword	Evans	Thorpe
Salmon	Thorpe	Rutter	Emerson	Sword	Jones*	Ryan
Salmon	Thorpe	Rutter	Emerson	Sword*	Thorpe	Ryan*
Salmon	Jones	Rutter	Emerson	Sword	Thorpe*	Williams
Salmon	Jones	Rutter	Emerson	Sword*	Thorpe	Ryan
Salmon	Rutter	Sherlock	Emerson*	Sword	Thorpe	Smith

STOP PRESS... STOP PRESS

## AN APOLOGY

DUE TO A LONG LIST OF  
FIRST TEAM SQUAD MEMBERS  
HAVE BEEN FORCED TO  
OUR CENTENARY GAME  
PARK NEXT WEDNESDAY  
HOWEVER PROMISED  
FIXTURE LATER IN THE SEASON

ANYONE WHO HAS PURCHASED TICKETS  
OBTAIN A FULL REFUND BY RETURNING TO  
OFFICE.



# Lancs League Scene



Evans Jones★ Jones Thorpe Thorpe★ Thorpe Thorpe	Thorpe Ryan Ryan★+ Williams Williams Ryan Smith	Jones Williams Smith Smith Smith Jones	Quinn x Quinn Quinn+ Quinn Quinn Williams★ Williams	Power Evans★ Power Power★ Coyle Power	Coyle Sherlock Sherlock Coyle Sherlock Coyle	Smith Power★ Smith★ Ryan★ Bowles★ Bowles
---	---	---	---	--	---	---

STOP PRESS... STOP PRESS

## APOLOGY

G LIST OF INJURIES TO THEIR SQUAD MANCHESTER CITY FORCED TO WITHDRAW FROM EVERY GAME HERE AT EDGELEY WEDNESDAY. THEY HAVE PROMISED TO FULFIL THE DUTY IN THE SEASON.

URCHASED TICKETS FOR THIS GAME CAN BE RETURNED BY RETURNING THEM TO THE GENERAL

Saturday, 10th September, 1983

FORMBY RESERVES 1  
COUNTY RESERVES 3

(Leigh, Williams P, McCreery)  
(Half-time: 0-2)

A GOOD result as County Reserves gained their first points of the new campaign. A fierce wind made conditions difficult in the first-half but luckily County won the toss and had the advantage of playing with the elements. A goal from Mark Leigh a 25 yard shot got the side going with Oshor William's brother Peter making it 2-0 just before the break.



PAUL BOWLES

Neil McCreery made it 3-0 midway through the second-half before Formby pulled a goal back on 75 minutes. The result could well have been a bigger winning margin for the visitors had they not hit the woodwork on two other occasions. COUNTY: Lloyd, Liptrott, Oliver, Bowles, Moore, Cunningham, McCreery, Leigh, Connor, Edwards, Williams, P. Subs: Moloney and Speight (not used).

## Division 1

### Fixtures 1983-84

Date	Opponents	
F 1983		
S Sep 2	BURNLEY 'A'	0-5
S Sep 10	Formby Reserves (Leigh, Williams P, McCreery)	3-1
F Sep 16	MANCHESTER UNITED 'A'	0-0
Th Sep 29	CREWE ALEXANDRA RES	H
F Oct 7	BARROW RESERVES	A
S Oct 15	Liverpool 'A'	A
F Oct 21	BOLTON WANDERERS 'A'	H
S Oct 29	Crewe Alexandra Res	A
F Nov 4	RUNCORN RESERVES	H
S Nov 12	Bolton Wanderers 'A'	A
F Nov 25	CHORLEY RESERVES	H
S Dec 3	Barrow Reserves	A
S Dec 10	Manchester City 'A'	A
S Dec 17	Runcorn Reserves	A
M Dec 26	Rochdale Reserves	A
F Dec 30	LIVERPOOL 'A'	H
1984		
S Jan 7	Tranmere Rovers Reserves	A
F Jan 13	EVERTON 'A'	H
S Jan 21	Manchester United 'A'	A
F Jan 27	TRANMERE ROVERS RESERVES	H
F Feb 10	SOUTHPORT RESERVES	H
F Mar 2	FORMBY RESERVES	H
S Mar 17	Everton 'A'	A
F Mar 23	MANCHESTER CITY 'A'	H
F Mar 30	U.M.I.S.T.	H
S Apr 7	Chorley Reserves	A
S Apr 21	Southport Reserves	A
S Apr 28	U.M.I.S.T.	A
S May 5	Burnley 'A'	A
F May 11	ROCHDALE RESERVES	H

## PROGRAMMES AWAY

Dot Stanway has asked me to thank all those excellent County supporters who have donated programmes to be sold in aid of raising money for the club. 'Keep sending them in, every one helps', she says. Just a word from myself on that subject too I would like to say a big 'Thank you' as well. I know it cannot be easy giving up your collections, but the thought that it's in a good and worthwhile cause is I know a compensation.





# THE BELGRADE GROUP OF HOTELS

**The largest privately owned Hotel Group in the North West**

*We offer excellent accommodation and cuisine, together with extensive Conference, Banqueting and Seminar facilities.*

**Belgrade Hotel: STOCKPORT 061-483 3851 \* Belgrade Hotel: OLDHAM 061-624 0555 \* Belgrade Hotel: BOLLINGTON 73246**

**All Bedrooms with Bath Shower, coloured television, radio, telephone and trouser press.**

## **FREDDIE PYE LIMITED METAL MERCHANTS**

**THE NORTH'S LEADING METAL MERCHANTS**

**2/8 HIGHER HILLGATE, STOCKPORT**

**Telephone: 061-480 4708**

**Highest market prices paid**

**Container service for large amounts**

**Works clearances our speciality**

**Registered Head Office:**

**ANTWERP HOUSE, BIRCH LANE, LONGSIGHT, MANCHESTER 13**

**Tel: 061-224 2231/2/3**

Sports Editor DAVE HARRISON  
will keep you in touch with all the news from  
Edgeley Park throughout the 1983-84 season  
in the . . .

**STOCKPORT**  
**Express Advertiser**  
**EVERY THURSDAY**

## **DO YOU MISS STEAM LOCO'S?**

Over 16,000 of them were scrapped between 1960—1968 and now less than two hundred of them remain. **The 48518 Society** exists to ensure the preservation to working order of a representative of the London Midland and Scottish Railway standard Bf 2-8-0 heavy goods locomotive class. The Society already owns 48624 and a tender to suit, as well as items of rolling stock which are used as workshop and stores.

The Society intends to restore and run 48624 on the main line. This Loco is typical of many that were based at Edgeley sheds and can now be seen at our headquarters next to Buxton Midland B.R. station **CAN YOU HELP?**

A Donation of 75p (or more) will entitle you to a copy of our newsletter and a photograph of the Loco. Full membership of our Friendly Society is Adults: **£5.00**, Family: **£10.00** and Juniors/Senior Citizens: **£2.50**. Membership is valid for one year from date of joining. Send a S.A.E. for details to: **Mr. Keith Godley, 11, Cobnar Drive, Newbold, Chesterfield, Derbyshire.**



**WE WISH COUNTY EVERY SUCCESS IN THIS THE CLUB'S CENTENARY SEASON!**



## AWAY THE LADS!

Canon League Division 4  
Saturday, 6th September, 1983.

**MANSFIELD TOWN 1**

(Thorpe, og 38)

**STOCKPORT COUNTY 2**

(Quinn 52, Sword 78)

Half-time: 1-0.

**Mansfield:** Arnold, Whitworth, Kearney, Lowery, Foster, Calderwood, Matthews, Sindall (Nicholson), Hutchinson, Caldwell, Dungworth.

**County:** Salmon, Jones, Rutter, Emerson, Sword, Thorpe, Williams, Smith, Quinn, Power, Sherlock. Sub: Ryan (not used).

Attendance: 2,166.

Referee: Mr. E.J. Scales (Ware)



County's first league win at **Field Mill** since **September 1962** came with a spirited second-half performance that saw **Mike Quinn** and **Tommy Sword** wipe out the home sides first-half advantage. **Mansfield** who went in front 7 minutes before the break with a **Andy Thorpe** own goal failed to get to grips with the visitors in the second 45 minutes and looked very much like a side without a win this term.

## Joannou's Look Around The Fourth!

### Tony Joannou

### City and United lead!

TWO clubs who in recent times have seen life outside Division Four continue to lead the pack at the top of the table last weekend.

York and Colchester are impressing many with their exciting displays and not surprisingly both recorded big home wins on Saturday.

City entertained struggling Chester and once again overwhelmed their opponents. Chester fresh from Milk Cup success over Bolton Wanderers, took a shock 4th minute lead but York, unbeaten in their last 23 home games soon hit back Striker **John Byrne** converted his first hat-trick in league football, while centre-back **John MacPhail** underlined York's superiority with a spectacular overhead conversion from 15 yards.

While City sit at the top of the table, they are closely followed by Colchester who dismissed Rochdale with great ease Rochdale came to Layer Road full of confidence after their 4-1 trouncing of Reading during the previous week. But they were soon deflated. A leaky defence saw United maintain incredible pressure on Dale and after 30 minutes the



inevitable happened; **Bowden** scored the opener. The greatest damage was created by teenage tearaway **Tony Adcock** who hit two goals and only had himself to blame for not converting a third; he missed an 86th minute penalty. A further goal by **Wignall** sentenced **Jimmy Greenhoff's** men to a 4-0 defeat.

Elsewhere, Reading's **Trevor Senior** found the net again and is the Canon League's leading marksman.

At Elm Park, Reading piled on the pressure against Chesterfield, yet it was the visitors who took the lead. **Steve Spooner** nodded in his debut league goal but just when it seemed that Chesterfield had the points wrapped up, that man **Senior** crashed in his 9th strike of the campaign.

Other results saw Crewe move up into an incredible 4th position in the table thanks to a 2-1 victory over Darlington. Success for some, but pity Torquay (going down 1-0 to Aldershot) and Chester who both have yet to record a victory in this new Canon League.

## TONIGHT'S COUNTY MASCOT

**STEVEN CREE** is tonight's County Match Mascot and 10 year old Steven is from Boddens Hill Road in Heaton Mersey.

Steven is a pupil at **North Heaton Primary School** whose hobby is collecting football programmes.



STEVEN CREE

Along with his parents who are season ticket holders at Edgeley Park, we wish Steven and his family an enjoyable evening with us tonight.

• *Would any parent who would like to nominate their son or daughter to be a County match-mascot for the night. Kindly write to the secretary c/o Stockport County F.C., Edgeley Park, enclosing the child's details and a recent photograph. All replies will be acknowledged by return of post.*



# *The Dingle Pet and Garden Centre*

**18/19 THE SHOPPING PRECINCT, CHEADLE HULME Tel: 061-485 3116**

**IT'S NO SHAGGY DOG STORY**  
**WHEN WE SAY THAT WE'VE GOT THE**  
**BEST FOR YOUR PETS**



**WE STOCK A LARGE RANGE OF  
PET FOODS AND ACCESSORIES  
MOST SMALL LIVESTOCK INCLUDING:**

*Pond Fish, Foreign Birds, Budgies, Canaries,  
Hamsters, Rabbits, Guinea Pigs and  
Goldfish are usually in stock.*



*We stock Cut Flowers, Pot Plants and supply  
Gift and Funeral Sprays plus Silk Flower  
Wedding Bouquets.*

**GARDEN PONDS • PUMPS • PLANTS  
COMPOSTS • FERTILISERS • LAWN SEED  
GROWMORE • LOOSE SLUG PELLETS  
CHRISTMAS TREES IN SEASON**

***GIVE US A TRY NOW! YOU WILL FIND OUR PRICES VERY COMPETITIVE***

## **ONE LINERS!**

- No winner yet in our programme cover photos competition. If you have any ideas then drop us a line
- Wally of the Week! Racing and Football Outlook's 1983-84 Annual. Why! Well it refers to County's manager (more than once) as Jimmy McGuigan. Considering Jim left E.P. in April '82; I wonder what Eric Webster has to say about it all.
- Seen teletext soccer on T.V.? How's this for a howler in one of last week's reports, Mansfield gained their first point and might have done better, but Halifax goalkeeper Smelt. Think about it; it made me laugh!
- Programme Fair. It takes place on Sunday 2nd October at the Pack Horse Hotel, Bradshawgate, Bolton from 11 a.m. to 3.30 p.m. Thousands of programmes for sale.

Stockport County  
Centenary Season  
1983-84  
**No. 4**  
**VOUCHER**



# County Gallery

## Part 4



**H. BURGESS**



**T. CAVANAGH**



**A. CASSIDY**



**R. CHARTER**



### The A—Z of Stockport County

#### FOOTBALL LEAGUE APPEARANCES AND GOALSCORERS 1900—1983

(as at 14 May 1983)

Word has it that our A—Z of County's Football League Appearances and Goalscorers is proving to be a big talking point among you County followers. Programme sell outs for our first three home games suggest you are collecting this fascinating series. Tonight in our A—Z we are completing the letter B and highlighted is a one Harry Burgess who in four seasons at EP scored a remarkable 71 League goals, which at the time was a record for the club. Onto the letter C we have some famous names such as Tommy Cavanagh and Ray Charter. Of course Tommy had a distinguished career in the mid-fifties with Huddersfield Town and Doncaster Rovers before becoming coach at Nottingham Forest, Manchester United and Newcastle. As for Ray Charter his proudest moment came not in the League for County but in the 1973-74 Football League Cup when his Edgeley Park goal knocked out Malcolm Allison's Crystal Palace.

No.	Name	Season first	In. played	App	Gls.	Seasons played	No.	Name	Season first	In. played	App	Gls.	Seasons played
109	Buck	G. 1962-63		3	0	1	127	Campbell	D. 1968-69		31	3	2
110	Buckley	A. 1946-47		11	0	1	128	Cant	J. 1934-35		2	0	1
111	Buckley	L. 1975-76		65	2	2	129	Carr	G. 1932-33		18	0	1
112	Bullock	S. 1934-35		2	0	1	130	Carrick	J. 1923-24		1	1	1
113	Bullough	D. 1919-20		17	2	2	131	Carter	R. 1907-08		27	7	1
114	Bunner	H. 1965-66		3	0	1	132	Cassidy	A. 1977-78		5	0	2
115	Burden	F. 1908-09		58	1	3	133	Catterick	H. 1926-27		13	1	1
116	Burrows	A. 1920-21		4	0	1	134	Cavanagh	T. 1949-50		32	2	3
117	Burrows	A. 1938-39		5	1	2	135	Cawley	E. 1927-28		8	0	3
118	Burgess	G. 1925-26		22	0	3	136	Chapman	E. 1946-47		9	3	1
119	Burgess	H. 1925-26		112	71	4	137	Chapman	J. 1969-70		129	8	5
120	Burns	W. 1931-32		6	0	1	138	Chapman	L. 1979-80		32	1	1
121	Butler	J. 1900-01		174	0	7	139	Charlton	T. 1909-10		93	26	4
122	Butt	L. 1929-30		8	1	2	140	Charter	R. 1971-72		91	2	3
123	Butterworth	T. 1905-06		117	0	4	141	Chesworth	F. 1901-02		27	10	1
124	Caddick	G. 1925-26		11	1	1	142	Chisnall	P. 1971-72		30	2	1
125	Cahill	P. 1978-79		3	0	1	143	Chivers	W. 1912-13		21	2	2
126	Caiels	A. 1934-35		2	1	1	144	Chorlton	T. 1900-01		27	0	3

NB: Totals include either one appearance (shown as \*) or two appearances (shown as \*\*) in games played which at the time were official records but which have since been erased from the record books. These records have been taken from the Official Football League reference books and the clubs own records. Whilst every effort has been made in compiling them no guarantee can be given for their complete accuracy. Current players appearances and goals totals should be added to those shown.



# County snap shots!

## WILLIAMS K.O's DALE WITH TWO TIMELY BODY BLOWS!



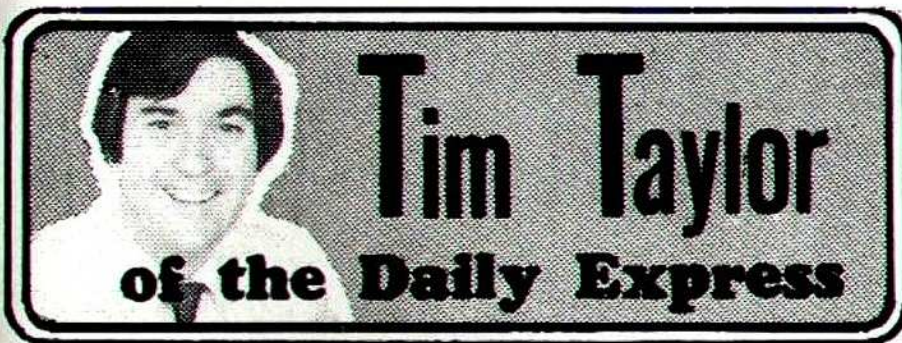
● **OSHOR WILLIAMS** . . . .  
2 goal hero against Rochdale.

● Midfield dynamo **Dean Emerson** (above) powers through the Rochdale ranks for an early shot at goal during action from the first round—2nd leg Milk Cup tie at Edgeley Park. This effort was brilliantly saved by 'Dale 'keeper Steve Conroy.

● **Mike Quinn's** No. 9 shirt does the trick again, even though he wasn't wearing it, as **Oshor Williams** pulls a goal back with this effort which stopped Rochdale's gallop and opened the scoring for County.







**HOOIGANISM** has become a talking point of the new season. It may come as a surprise to fans to learn that, within the game, the press get almost as much criticism for reporting the trouble as the brain donors do for creating it.

Unfortunately, like any other problem, it is highly unlikely to disappear simply by ignoring it although there can be no excuse whatsoever for interviews conducted **WITH** hooligans. As a journalist, I appreciate fully that this is scraping the barrel and simply panders to the ego.

However, my view is that football needs to put pressure on the government of the day to make the punishment fit the crime. Accurate reporting which illustrates fully the reality of any situation is a valuable

weapon in the political arena. Eventually, the courts may be given the powers they need.

You may have your own, different, views on what needs to be done. The arguments and points of view about this sort of subject—crime and punishment related to social and economic conditions and so on—are as old and well contested as time itself.

What is important is that we try to do something to change things in the future. What does tend to be over-looked in the welter of words written and talked about the subject is that football hooligans are not delivered by the stork or fall down off gooseberry bushes.

Most of them have parents. As I understand the role of **parents**, it is to be

responsible for their children, yet it is becoming more common to see very young lads going to matches themselves. Very young lads can be very easily led astray. Even by a minority. Especially if their parents are not bothering to take sufficient interest in their welfare or their whereabouts.

In their different ways, schools and the police have their various responsibilities. But I would suggest that the majority of football hooligans come from homes where the parents have abdicated **ALL** their own responsibilities. When you see young kids roaming the streets after school, often until after dark, you know there are far too many of them to all be orphans. Come to think of it, if they were orphans they would be looked after properly.

There is a big difference between molly-coddling young kids and fulfilling one of the basic duties of any parent. To do everything possible to make sure they know where the youngsters are—and what they are doing—at any given time. And even to give up the odd night in front of the telly to do something with their kids now and then!

A lot of people see a lot of merit in making parents legally responsible for the crimes of their children, as long as it can be proved they have neglected their duties as parents. Can there be a bigger crime than sitting back and letting your own kid turn out all wrong?



#### COUNTY MATCH BALL DONORS 1983-84

- Aug 27 York City—Mrs Cavender Edgeley
- Sept 9 Colchester United—G and A White Noggin Farm, Adlington
- 12 Rochdale—Mr Thompson, Dingle Pet Stores, Cheadle Hulme
- 23 Swindon Town—Mr Clough Garden Minders, Poynton
- 26 Wrexham—Supporters of Poynton
- Oct 3 Oldham Athletic—Mr & Mrs F. Dolan, Stockport.
- 15 Darlington—Mr Cohen
- 17 Aldershot—Stockport & District Sunday Football League
- 29 Blackpool—Berry & Jackson Printer's St. Annes.
- Nov 11 Halifax Town—Nazir's Food Stockport
- Dec 2 Torquay United—Dave Hunt Market Supplies, Stockport.
- 16 Tranmere Rovers—Sabar Car Hire
- 27 Hereford United—Mr Thompson Dingle Pet Stores, Cheadle Hulme
- Jan 2 Hartlepool United—Wellington Garage, Heaton Chapel.
- 6 Reading—Dave Gardner
- 20 Northampton Town—Cannock Car Centre
- Feb 3 Crewe Alexandra—Roy Lomas Roofing
- 13 Bury—G.B. Associates Interior Design Consultants, Stockport.
- 24 Chester City—Allen Dawson Butchers, Edgeley.
- Mar 5 Rochdale—Mr C. Peel, Prestwich
- 16 Chesterfield—
- Apr 6 Mansfield Town—Brimaur Car Sales
- 21 Bristol City—David Morgan
- 27 Peterborough United—G and A White, Noggin Farm, Adlington.
- May 7 Doncaster Rovers—Mrs Cavender Edgeley

*We should like to thank all our Match Ball Sponsors for their help in this our 'Centenary Season'. Anyone who would like to sponsor one of our Match Balls should ring 061-480 8888 for further details.*



# The Teams

## STOCKPORT COUNTY

(Royal Blue/White/Red)

MICK SALMON .....	1	JIMMY ALLEN .....
JOHN RUTTER .....	2	COLIN BAILIE
STEVE SHERLOCK .....	3	KEVIN BADDELEY .....
DEAN EMERSON .....	4	GARY EMMANUEL .....
TOMMY SWORD .....	5	NIGEL GRAY .....
ANDY THORPE .....	6	MIKE GRAHAM .....
OSHOR WILLIAMS .....	7	DAVE HOCKADAY
GRAHAM JONES .....	8	LEIGH BARNARD .....
MIKE QUINN .....	9	ANDY ROWLAND .....
MIKE POWER .....	10	JIMMY QUINN .....
TONY COYLE .....	11	GARY NELSON .....
.....	12	.....

Subject to alteration

## SWINDON TOWN

(Red/Red/White)

## Today's match ball donated by



**Mr. CLOUGH** Garden Minders, Poynton  
We thank him for his support.

## Meet the referee

### JOHN HUNTING (Leicester)

Began refereeing whilst serving with the Royal Signals in Egypt and Cyprus and progressed to the full League list via the Leicestershire Senior League and Football Combination in 1968. Appointed to F.I.F.A's list in 1973. Mr. Hunting last took charge at Edgeley Park in December 1975 v Watford. He was however to have taken charge of Rochdale's visit here last season but pulled out at the last minute.

Red flag

Linesmen:

Yellow flag

**L.A. HOWGATE** (Wallasey)

**P.J. RICE** (Birkenhead)

## Today's Match Statistics

Result: County ..... Visitors ..... Half-Time: .....

County scorers: .....

Visitors' scorers: .....

Attendance ..... Man of the Match: .....

Bookings: .....

Substitutions: .....

Goals Scored			
County	Visitors	County	Visitors
Cheadle End .....	Railway End .....		

## Next at home

CANON LEAGUE DIVISION FOUR

**STOCKPORT COUNTY versus WREXHAM**

Monday, 26th September, 1983. Kick-off 7.30 p.m.